

Sediment Disaster Hazard Map



Anamizu Town

Ra-174 Kawajima, Anamizu Town, Hosu District, Ishikawa Prefecture 927-8601

Tel: (0768) 52-0300 Fax: (0768) 52-1196
Email: anamizu@town.anamizu.lg.jp

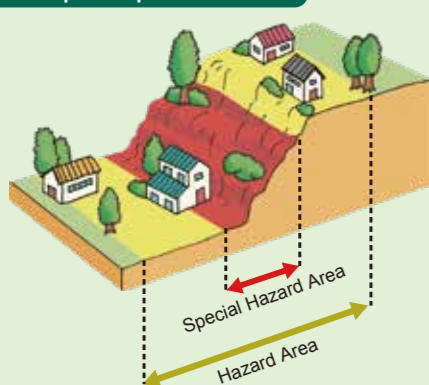
Prepared March 2021

Types of Sediment Disasters and Their Warning Signs

Learn about the types of sediment disasters and their warning signs. If you see any of these warning signs, contact the town office.

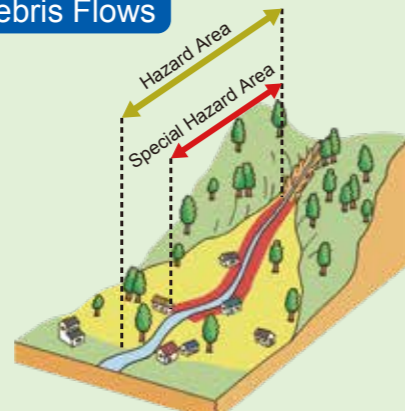
Types of Sediment Disasters

Steep Slope Failures



When sediment suddenly falls from a steep slope, crushing buildings and roads.

Debris Flows



When large amounts of sediment flow down along with water, washing away buildings and roads.

Landslides



When a whole section of the ground's surface slides down, crashing into buildings and roads.

Warning Signs of Sediment Disasters

Cracks Appearing



Dropping Water Level



Falling Rocks



Water Springs Stopping



Water Springs Appearing



Muddy Rivers



Muddy Well Water

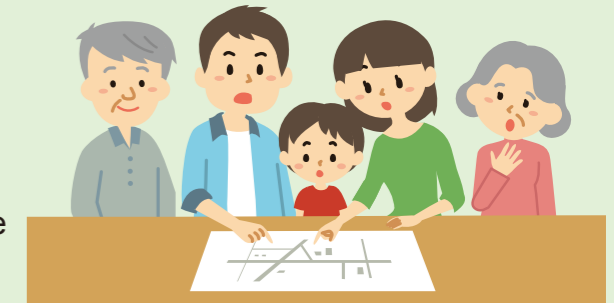


Rumbling Ground



Learn Where Dangerous Places and Evacuation Shelters Are!

It's important to learn about places where there is a risk of a sediment disaster, and to know ahead of time which evacuation shelter you should use in the event of a sediment disaster. It's also helpful to regularly talk about these things with family and people in your community, so that you can make your own evacuation decisions and take prompt action in an emergency.



How Information Is Provided

Anamizu Town Disaster Measures Headquarters
TEL:0768-52-0300



Evacuation Information

Weather Information

- Public Address Loudspeakers
- Public Address Vehicles
- Sirens
- CATV (Cable TV)
- Website
- Emergency Report Emails

Town Residents

Evacuation Information and Severe Weather Preparation Information

Evacuation Information

Warning Level	Evacuation Actions to Take	Evacuation Information
Warning Level 5	Already a disaster situation. Take care, and do your best to keep yourself alive.	<p>Disaster Occurrence Information^{*1}</p> <p>^{*1} Issued to the extent possible, when the town confirms that a disaster has actually occurred</p>
Warning Level 4 Everyone Evacuate	Evacuate from dangerous areas to evacuation shelters as soon as possible. If it seems like it would be unsafe to travel to an official evacuation shelter, make your way to a safe place nearby, or to a safer part of your home.	<p>Evacuation Advisory</p> <p>Evacuation Instruction (Urgent)^{*2}</p> <p>^{*2} Issued based on the local situation, when necessary, urgently or repeatedly encourage evacuation</p>
Warning Level 3 Elderly People, etc. Evacuate	People who need extra time to evacuate (such as elderly people, people with disabilities, families with babies and small children) and their caretakers should evacuate. Others should make preparations to evacuate.	Evacuation Preparations/Start of Evacuation for Elderly People
Warning Level 2	Make preparations to evacuate, such as confirming your evacuation plans using hazard maps and other information.	<p>Issued by JMA</p> <p>Flood Advisory, Heavy Rain Advisory, etc.</p>
Warning Level 1	Pay attention and prepare for possible disasters.	<p>Issued by JMA</p> <p>Early Warning Information</p>

Severe Weather Preparation Information

Examples of Warnings Issued at Each Level

Warning Level 5 Examples

- Inundation Occurrence Information
- Torrential Rain Special Warnings, etc.

Warning Level 4 Examples

- Inundation Risk Information
- Sediment Disaster Warning Information, etc.

Warning Level 3 Examples

- Inundation Warning Information
- Flood Warnings, etc.

This information is issued to help local residents make their own decisions about evacuation.

Note that advisories and other information are not necessarily issued in order from 1 to 5, and that conditions may change rapidly.